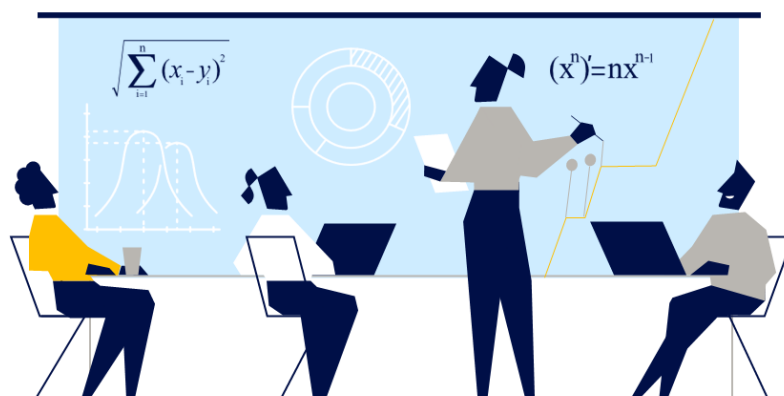


MARSH

Institute
and Faculty
of Actuaries

The Actuarial Edge 2026



Beyond the tables. Into the future.

The Actuarial Edge 2026

National Actuarial Case Competition

Participant Guide

A collaborative initiative between the Institute and Faculty of Actuaries (IFoA) and Marsh, bringing real-world risk challenges to university talent across India.

About the Competition

The Institute and Faculty of Actuaries (IFoA), in partnership with Marsh, is pleased to launch The Actuarial Edge 2026 — a national case competition designed to provide students with hands-on exposure to real-world actuarial and risk consulting challenges.

The competition aims to help students develop practical problem-solving, analytical, actuarial, and business communication skills while exploring emerging challenges across insurance, pensions, health, climate risk, analytics, and reinsurance.

Participants will work on industry-inspired case studies developed by Marsh professionals and present solutions to a panel comprising senior actuarial and business leaders.

Competition Themes

Teams may choose **ONE** of the following technical tracks. Please click on the links on each track to go through the case. For track 4 there are additional resource links in the track summary.

1	<p>Track 1: Wealth & Pensions</p> <p>Salary, Savings & Sacrifice: Designing India's Smarter Retirement Strategy</p> <p>Focused on global retirement optimization and the behavioral trade-offs of early homeownership. It challenges students to build a dynamic financial calculator evaluating mandatory EPF, voluntary NPS, and a specialized defined-benefit "WeCare" plan, incorporating dynamic take-home salary impact modeling.</p>
2	<p>Track 2: Health Analytics</p> <p>Predicting High-Cost Members</p> <p>An advanced AI/analytics track focused on predictive care management. Students will use historical claims, demographic, and pharmacy data to build risk-scoring predictive models (utilizing explainable frameworks like logistic regression or gradient-boosted trees with SHAP) to isolate future high-cost claimants.</p>
3	<p>Track 3: Property & Casualty</p> <p>Protection Gap Challenge</p> <p>Focused on systemic climate change and closing the protection gap for underserved or vulnerable segments exposed to extreme weather conditions (heatwaves and extreme rainfall). It evaluates product design across parametric, indemnity, or hybrid models, alongside commercial sustainability metrics.</p>
4	<p>Track 4: Reinsurance & Analytics</p> <p>Property Catastrophe Reinsurance Program</p> <p>A highly technical track utilizing open-source NOAA Storm Events data. It requires students to fit parametric frequency/severity models, build compound aggregate-loss simulators, price complex reinsurance treaties (Per-Occurrence XL, Stop-Loss, Quota Share), and explore machine learning segmentation via XGBoost. Pls check Synthetic Exposure Generator.</p>

Competition Structure

Round 1	Written Submission	Presentation deck (PDF, max 15 slides) + supporting analysis Evaluated by senior leaders from Marsh
Round 2	Virtual Presentation	10-minute presentation + 5-minute Q&A before judging panel Top teams advance to Grand Finale
Round 3	Grand Finale	Refined presentations incorporating Round 2 feedback Judged by senior leaders from Marsh

Team Composition

- Teams may consist of a maximum of 3 students.
- All team members must be enrolled in a recognised undergraduate programme.
- Students from actuarial and non-actuarial disciplines are welcome to participate.
- Interdisciplinary teams are strongly encouraged.

Judging Criteria

Criterion	What Judges Look For
Problem Understanding	Identify and articulate the key business challenge.
Technical Approach	Application of actuarial, analytical, statistical, or risk management concepts.
Innovation	Creativity and originality in developing solutions.
Commercial Awareness	Practicality, feasibility, and business relevance of recommendations.
Communication	Clarity, structure, storytelling, and presentation effectiveness.
Impact	Ability of the proposed solution to create measurable value for stakeholders.

Deliverables

Round 1 – Written Submission

Round 1 requires teams to analyse their chosen case study and develop a structured, evidence-based solution. Your submission will be evaluated on the quality of your thinking, methodology, and communication.

What to Submit

1. **Presentation Deck** – A PDF of maximum 15 slides (excluding appendix). This is your primary deliverable.

2. **Supporting Analysis** (if applicable) – Any datasets, models, or workings that underpin your recommendations. Submit as a separate Excel or PDF file.

Presentation Deck Structure

Teams are encouraged to follow this structure, though you may adapt it to suit your track:

1. **Executive Summary** – A concise overview of the problem, your approach, and key recommendations (1 slide).
2. **Problem Diagnosis** – Define the core challenge, its scope, and why it matters to stakeholders.
3. **Data & Analysis** – Present your key findings. Show the data, models, or frameworks used and explain your methodology clearly.
4. **Proposed Solution** – Detail your recommended approach. Be specific — avoid vague suggestions.
5. **Financial / Analytical Justification** – Quantify the impact or feasibility of your solution wherever possible.
6. **Risks & Limitations** – Acknowledge assumptions, data limitations, and potential failure points. Judges value intellectual honesty.
7. **Implementation Roadmap** – Outline how your solution would be put into practice: timeline, resources, stakeholders involved.
8. **Expected Impact** – What measurable outcomes would your solution deliver?
9. **Recommendations** – Clear, actionable takeaways for the decision-maker.
10. **Appendix** (optional, not counted in the 15-slide limit) – Additional data, charts, model outputs, or references.

Formatting Guidelines

- All slides must be submitted in **PDF format**.
- Font size should be legible — avoid dense text-heavy slides.
- Charts, graphs, and tables are encouraged where they strengthen your argument.
- Cite all external data sources, research, and references clearly (in-slide or in an appendix).
- AI tools may be used for research and drafting, but all assumptions, outputs, and conclusions must be understood and validated by your team.

Teams are encouraged to:

- Conduct independent research using credible, publicly available data sources
- Apply actuarial and analytical techniques relevant to the chosen track
- Demonstrate commercial thinking and practical creativity in their solutions

Round 2 – Virtual Presentation

Round 2 builds on your Round 1 submission. You will present your solution to a judging panel virtually. No changes to the deck are required or expected — the focus is entirely on how well you communicate and defend your solution.

Format

- **Duration:** 10 minutes presentation + 5 minutes Q&A
- **Mode:** Virtual (platform details will be shared with shortlisted teams)
- **Presenters:** All team members may present and the full team must be present and on camera during the Q&A

Grand Finale

Teams shortlisted for the final round will be required to present their solutions in person at Marsh office in **Gurgaon and Mumbai**. Venue allocation will be determined by the organisers, taking into consideration participants' location and preference wherever possible. All travel, accommodation, and related expenses for attending the final round must be borne by the participants.

Detailed guidelines for the Grand Finale — including presentation format, expectations, and how to strengthen your submission for the final round — will be shared well in advance of the event.

General Rules

- Each team may submit only one entry.
- Teams must select only one competition track.
- All work submitted must be entirely original.
- Plagiarism of any kind will result in immediate disqualification.
- External data, research, statistics, models, or frameworks must be appropriately cited.
- Teams may use publicly available information and AI-enabled tools; however, all assumptions, methodology, and outputs must be clearly explained and validated by the team.
- Competition materials must not be shared outside the competition.
- Team composition cannot be changed after submission unless approved by the organising committee.
- Decisions of the judging panel shall be final.

Important Dates

Activity	Date
Registrations Open	8 th June 2026
Registration and Submission Closes	30 th June 2026
Submissions sent to the jury	1 st Jul 2026
Shortlist Top 10 Teams	By 8 th July 2026
Virtual Round (Top 10 Presentations)	22 nd July – 24 th July 2026
Notification to the Finalist Teams	31 st July 2026
Final Presentations (Top 5)	21 st August 2026

Prizes & Recognition

- **First Prize:** Amazon Vouchers worth **INR 50,000**
- **Second Prize:** Amazon Vouchers worth **INR 30,000**
- **Third Prize:** Amazon Vouchers worth **INR 20,000**
- **Fourth, and Fifth Prizes:** Amazon Vouchers worth **INR 10,000** each
- **Certificates:** Official co-branded merit certificates for all individual finalist team members.
- **The Actuarial Edge Trophy:** A trophy that the winning team takes back to their college for the year.

About the Organisers

Institute and Faculty of Actuaries (IFoA)

The IFoA is the UK's chartered professional body for actuaries and a global leader in actuarial education and professional development, with members operating across insurance, pensions, investment, and risk management worldwide.

Marsh

Marsh is the world's leading insurance broker and risk advisor, helping clients navigate uncertainty and build resilience through data-driven insights, innovative risk management solutions, and deep sector expertise.

Disclaimer

The information contained in this participant guide is correct at the time of publication. The organising committee reserves the right to amend competition rules, timelines, format, or any other details at its discretion. Any changes will be communicated to registered teams in a timely manner.

The case studies provided are fictional and created solely for the purpose of this competition. They do not represent the actual clients, portfolios, or strategies of Marsh or the IFoA. Any resemblance to real entities or situations is coincidental.

Submissions and all associated materials become the property of the organising committee upon submission. The IFoA and Marsh reserve the right to share, reference, or showcase shortlisted and winning submissions for educational and promotional purposes, with appropriate credit to the team.

Participation in this competition constitutes acceptance of all rules and guidelines outlined in this document.

Contact Us

For any queries regarding registration, eligibility, competition tracks, or logistics, please reach out to the organising team:

Email: southasia@actuaries.org.uk

We aim to respond to all queries within 3–5 working days. Please check your registered email regularly for updates and announcements regarding the competition.